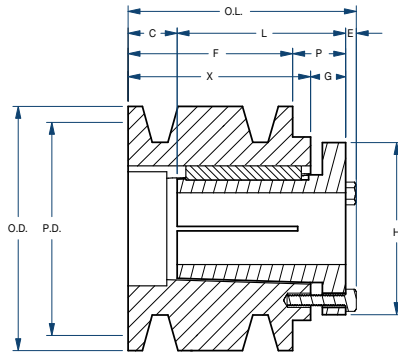
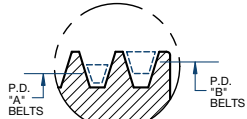


# Sheaves

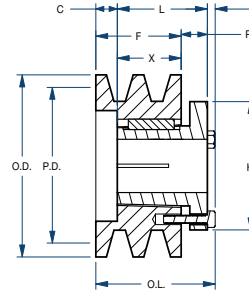
## 5TB/Split Taper



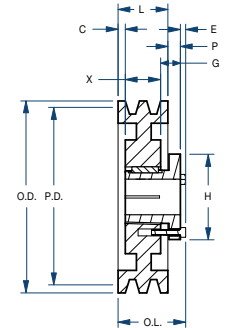
# BLACKSTAR®



Type 3



Type 5



Type 13

Part Number		Diameters (in)			Type	Dimensions (in)										Weight less Bushing (lbs)
Sheave	Bushing	Pitch A	Pitch B	Outside		O.L.	L	P	C	H	F	G	X	E		
5TB34	P2	3.0	3.4	3.75	3	5-5/16	2-15/16	1-1/16	2-1/8	3	4	5/8	2-5/16	1/4	5.3	
5TB36	P2	3.2	3.6	3.95	3	5-5/16	2-15/16	1-1/16	2-1/8	3	4	5/8	2-5/16	1/4	6.1	
5TB38	P2	3.4	3.8	4.15	5	4-7/8	2-15/16	5/8	1-11/16	3	4	—	2-5/16	1/4	6.1	
5TB40	P2	3.6	4.0	4.35	5	4-7/8	2-15/16	5/8	1-11/16	3	4	—	2-5/16	1/4	7.0	
5TB42	P2	3.8	4.2	4.55	5	4-7/8	2-15/16	5/8	1-11/16	3	4	—	2-5/16	1/4	7.8	
5TB44	P2	4.0	4.4	4.75	13	4-1/4	2-15/16	0	1-1/16	3	4	5/8	2-5/16	1/4	8.5	
5TB46	P2	4.2	4.6	4.95	13	4-1/4	2-15/16	0	1-1/16	3	4	5/8	2-5/16	1/4	9.8	
5TB48	P2	4.4	4.8	5.15	13	4-1/4	2-15/16	0	1-1/16	3	4	5/8	2-5/16	1/4	10.5	
5TB50	P2	4.6	5.0	5.35	13	4-1/4	2-15/16	0	1-1/16	3	4	5/8	2-5/16	1/4	11.6	
5TB52	P2	4.8	5.2	5.55	13	4-1/4	2-15/16	0	1-1/16	3	4	5/8	2-5/16	1/4	12.5	
5TB54	Q1	5.0	5.4	5.75	13	4-9/32	2-1/2	0	1-1/2	4-1/8	4	3/4	1-3/4	9/32	10.4	
5TB56	Q1	5.2	5.6	5.95	13	4-9/32	2-1/2	0	1-1/2	4-1/8	4	3/4	1-3/4	9/32	11.8	
5TB58	Q1	5.4	5.8	6.15	13	4-9/32	2-1/2	0	1-1/2	4-1/8	4	3/4	1-3/4	9/32	12.8	
5TB60	Q1	5.6	6.0	6.35	13	4-9/32	2-1/2	0	1-1/2	4-1/8	4	3/4	1-3/4	9/32	13.8	
5TB62	Q1	5.8	6.2	6.55	13	4-9/32	2-1/2	0	1-1/2	4-1/8	4	3/4	1-3/4	9/32	14.6	
5TB64	Q1	6.0	6.4	6.75	13	4-9/32	2-1/2	0	1-1/2	4-1/8	4	3/4	1-3/4	9/32	16.4	
5TB66	Q1	6.2	6.6	6.95	13	4-9/32	2-1/2	0	1-1/2	4-1/8	4	3/4	1-3/4	9/32	17.1	
5TB68	Q1	6.4	6.8	7.15	13	4-9/32	2-1/2	0	1-1/2	4-1/8	4	3/4	1-3/4	9/32	17.9	
5TB70	Q2	6.6	7.0	7.35	13	4-13/32	3-1/2	1/8	5/8	4-1/8	4	3/4	2-3/4	9/32	20.9	
5TB74	Q2	7.0	7.4	7.75	13	4-13/32	3-1/2	1/8	5/8	4-1/8	4	3/4	2-3/4	9/32	19.8	
5TB80	Q2	7.6	8.0	8.35	13	4-13/32	3-1/2	1/8	5/8	4-1/8	4	3/4	2-3/4	9/32	22.3	
5TB86	Q2	8.2	8.6	8.95	13	4-13/32	3-1/2	1/8	5/8	4-1/8	4	3/4	2-3/4	9/32	29.5	
5TB90	Q2	8.6	9.0	9.35	13	4-13/32	3-1/2	1/8	5/8	4-1/8	4	3/4	2-3/4	9/32	28.6	
5TB94	Q2	9.0	9.4	9.75	13	4-13/32	3-1/2	1/8	5/8	4-1/8	4	3/4	2-3/4	9/32	29.5	
5TB110	Q2	10.6	11.0	11.35	13	4-13/32	3-1/2	1/8	5/8	4-1/8	4	3/4	2-3/4	9/32	32.8	
5TB124	Q2	12.0	12.4	12.75	13	4-13/32	3-1/2	1/8	5/8	4-1/8	4	3/4	2-3/4	9/32	34.4	
5TB136	Q2	13.2	13.6	13.95	13	4-13/32	3-1/2	1/8	5/8	4-1/8	4	3/4	2-3/4	9/32	41.0	
5TB154	Q2	15.0	15.4	15.75	13	4-13/32	3-1/2	1/8	5/8	4-1/8	4	3/4	2-3/4	9/32	45.3	
5TB160	Q2	15.6	16.0	16.35	13	4-13/32	3-1/2	1/8	5/8	4-1/8	4	3/4	2-3/4	9/32	48.0	
5TB184	Q2	18.0	18.4	18.75	13	4-13/32	3-1/2	1/8	5/8	4-1/8	4	3/4	2-3/4	9/32	57.3	
5TB200	Q2	19.5	20.0	20.35	13	4-13/32	3-1/2	1/8	5/8	4-1/8	4	3/4	2-3/4	9/32	66.0	
5TB250	Q2	24.5	25.0	25.35	13	4-13/32	3-1/2	1/8	5/8	4-1/8	4	3/4	2-3/4	9/32	82.5	
5TB300	Q2	29.5	30.0	30.35	13	4-13/32	3-1/2	1/8	5/8	4-1/8	4	3/4	2-3/4	9/32	117.0	
5TB380	Q2	37.5	38.0	38.35	13	4-13/32	3-1/2	1/8	5/8	4-1/8	4	3/4	2-3/4	9/32	159.0	